

**LOS ANGELES COUNTY
DEPARTMENT OF PUBLIC WORKS**

BENCHMARKS



NORWALK QUAD

**2005 ADJUSTMENT
2005 BASELINE
NAVD 88 DATUM FOOT/METER**

PREFACE

The Department of Public Works level net is composed of more than 1,700 miles or 2720 kilometers of levels supporting in excess of 9,000 benchmarks. Previously when a major readjustment of the net was undertaken, to emphasize the complete break with previous elevations, the CY, CG, and CL, series benchmarks were re-labeled DY, DG, and DL, respectively. Beginning in 1993 the Baseline readjustment year will be indicated on Baseline BM's, as indicated below (*). Henceforth all BM numbers will be labeled as a Y, G, or L series that will no longer indicate the major adjustment year.

To facilitate the adjustment, indexing and distribution of the adjusted values of the net, the county territory was divided into 33 quads or areas. For the identification purposes each quad was given a name (i.e. "Rosemead", "La Mirada", and "Santa Fe"...etc). When benchmarks and elevations in the quad are used, the name of the bench and quad must be stated in the description, i.e.:

(*)	BASELINE	90.057	L&BR IN CTR OF CB RET @ NE COR	Y 9191
	(1990)	295.461	LA HABRA BLVD & VALLEY HOME AVE	

It is expected that this general adjustment will for the most part remain sound for 8 to 10 years. Updating constrained adjustments will continue in the future. When a quad is readjusted, new elevations will be published and the date of readjustment will be noted in the benchmark description. Two benchmarks with different adjustment dates will not normally agree with each other.

The basic accuracy of the net is reflected by an indicated field probable error of ± 0.017 feet per mile (4mm per kilometer) of leveling as determined from conditions of closure. However, many years of experience in vertical control in the greater Los Angeles basin and Antelope Valley indicates that because of varying degrees of subsidence and heaving, the true datum is recovered only by obtaining substantial agreement of a number of benchmarks.

The users of this network of benchmarks are invited to assist in its maintenance by notifying this department of cases of obliteration, apparent mistakes in descriptions or elevations, and the disturbance of benchmarks.

Datum: North American Vertical Datum of 1988 (NAVD88)

Note: NAVD 1988 minus approximately 2.3 feet (70 cm) equals NGVD 1929 Datum. For more accurate equations at individual benchmarks refer to previous publications.

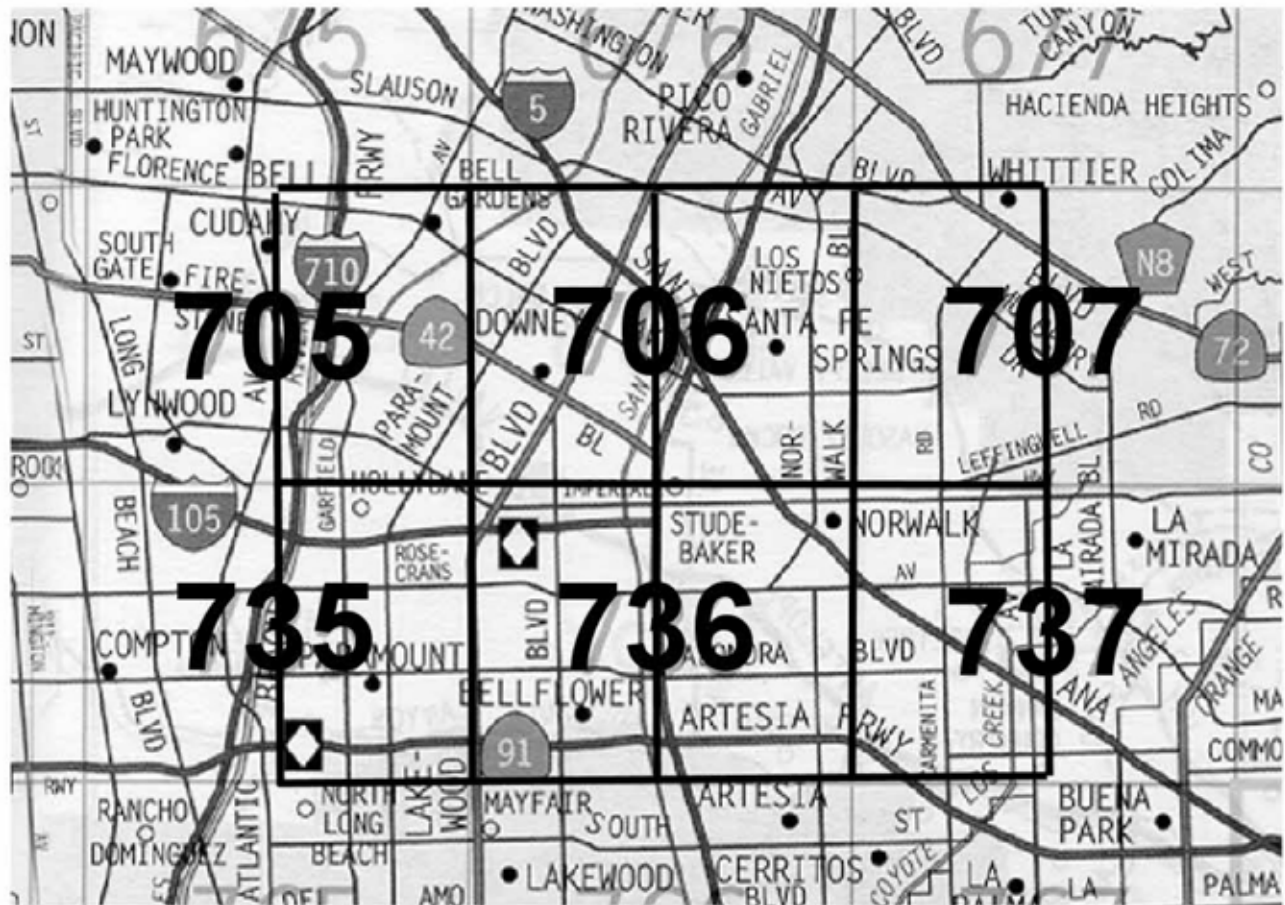
Abbreviations used in Benchmark Descriptions

Abbreviations	Descriptions	Abbreviations	Descriptions
<i>ABUT</i>	Abutment	<i>LT</i>	Lead and Tack
<i>ALG</i>	Along	<i>LACE</i>	Los Angeles City Engineer
<i>ANG PT</i>	Angle Point	<i>LACS</i>	La County Engineer
<i>B/W</i>	Back of Walk	<i>LAFC</i>	La County Flood Control
<i>BCR</i>	Begin Curb Return	<i>L&BN</i>	Lead and Bench Nail
<i>BC</i>	Begin Curve	<i>L&BR</i>	Lead and Brad
<i>BLDG</i>	Building	<i>L&N</i>	Lead and Nail
<i>BM</i>	Benchmark	<i>L&SPK</i>	Lead and Spike
<i>BT SPK</i>	Boat or Bolt Spike	<i>L&T</i>	Lead and Tack
<i>BR CAP</i>	Brass Cap Monument	<i>MCR</i>	Middle Curb Return
<i>C B</i>	Catch Basin	<i>MKD</i>	Marked
<i>CTR</i>	Center	<i>MC</i>	Middle Curve
<i>C/L</i>	Centerline	<i>MON</i>	Monument
<i>C/L INT</i>	Centerline Intersection	<i>N/O</i>	North of
<i>C/L PROD</i>	Centerline Produced	<i>NR</i>	Near
<i>CONC</i>	Concrete	<i>OPP</i>	Opposite
<i>COR</i>	Corner	<i>PI</i>	Point of Intersection
<i>COE</i>	Corps of Engineers	<i>PK&W</i>	PK Nail and Washer
<i>CULV</i>	Culvert	<i>P/L</i>	Property Line
<i>CYN</i>	Canyon	<i>POST</i>	Point on Simi-Tangent
<i>CB</i>	Curb	<i>PP</i>	Power Pole
<i>CS MON</i>	Co. Eng. Monument	<i>PVMT</i>	Pavement
<i>CT SPK</i>	Cut Spike	<i>PROD</i>	Produced
<i>DPW</i>	Dept of Public Works	<i>RD</i>	Road
<i>DR</i>	Driveway	<i>RDBM</i>	Road Dept Benchmark
<i>E/O</i>	East of	<i>RDBM TAG</i>	Road Dept Benchmark Tag
<i>ECR</i>	End Curb Return	<i>RR</i>	Railroad
<i>EC</i>	End Curve	<i>R/W</i>	Right of Way
<i>ENT</i>	Entrance	<i>SDMH</i>	Storm Drain Manhole
<i>FL</i>	Flow line	<i>SMH</i>	Sewer Manhole
<i>FTG</i>	Footing	<i>SPK</i>	Spike
<i>FRWY</i>	Freeway	<i>ST&W</i>	Spike Tin and Washer
<i>F/W</i>	Front of Walk	<i>S/O</i>	South of
<i>GAR</i>	Garage	<i>TP</i>	Telephone Pole
<i>HDWL</i>	Head Wall	<i>USC&GS</i>	US Coast and Geodetic Survey
<i>HSE</i>	House	<i>USGS</i>	US Geological Survey
<i>HWY</i>	Highway	<i>WK</i>	Walk
<i>INT</i>	Intersection	<i>W/O</i>	West of
<i>IP</i>	Iron Pipe		

QUAD COVERAGE INDEX MAP

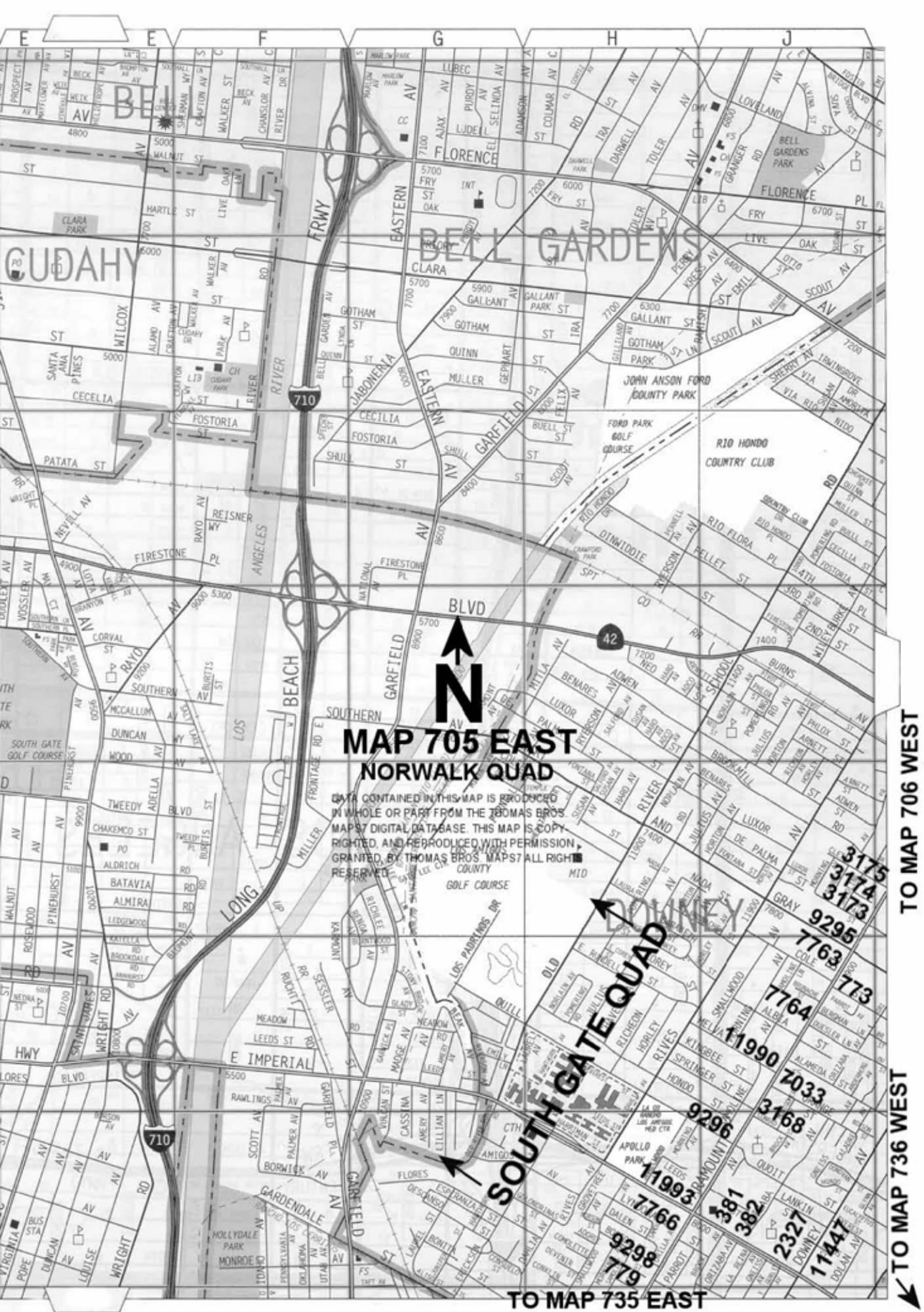


NORWALK QUAD INDEX



**NUMBERS REFER
TO THOMAS BROS
PAGE NUMBERS**

**EACH THOMAS BROS
PAGE IS DIVIDED INTO
TWO INDEX PAGES
EAST AND WEST**



BELL GARDENS

CUDAHY

BELL GARDENS

MAP 705 EAST NORWALK QUAD



DATA CONTAINED IN THIS MAP IS PRODUCED IN WHOLE OR PART FROM THE THOMAS BROS MAPS® DIGITAL DATABASE. THIS MAP IS COPY RIGHTED, AND REPRODUCED WITH PERMISSION, GRANTED BY THOMAS BROS MAPS® ALL RIGHTS RESERVED.

TO MAP 706 WEST

TO MAP 736 WEST

TO MAP 735 EAST

SOUTH GATE QUAD

3175

3174

3173

9295

7763

773

7764

11990

7033

3168

9296

11993

7766

9298

779

381

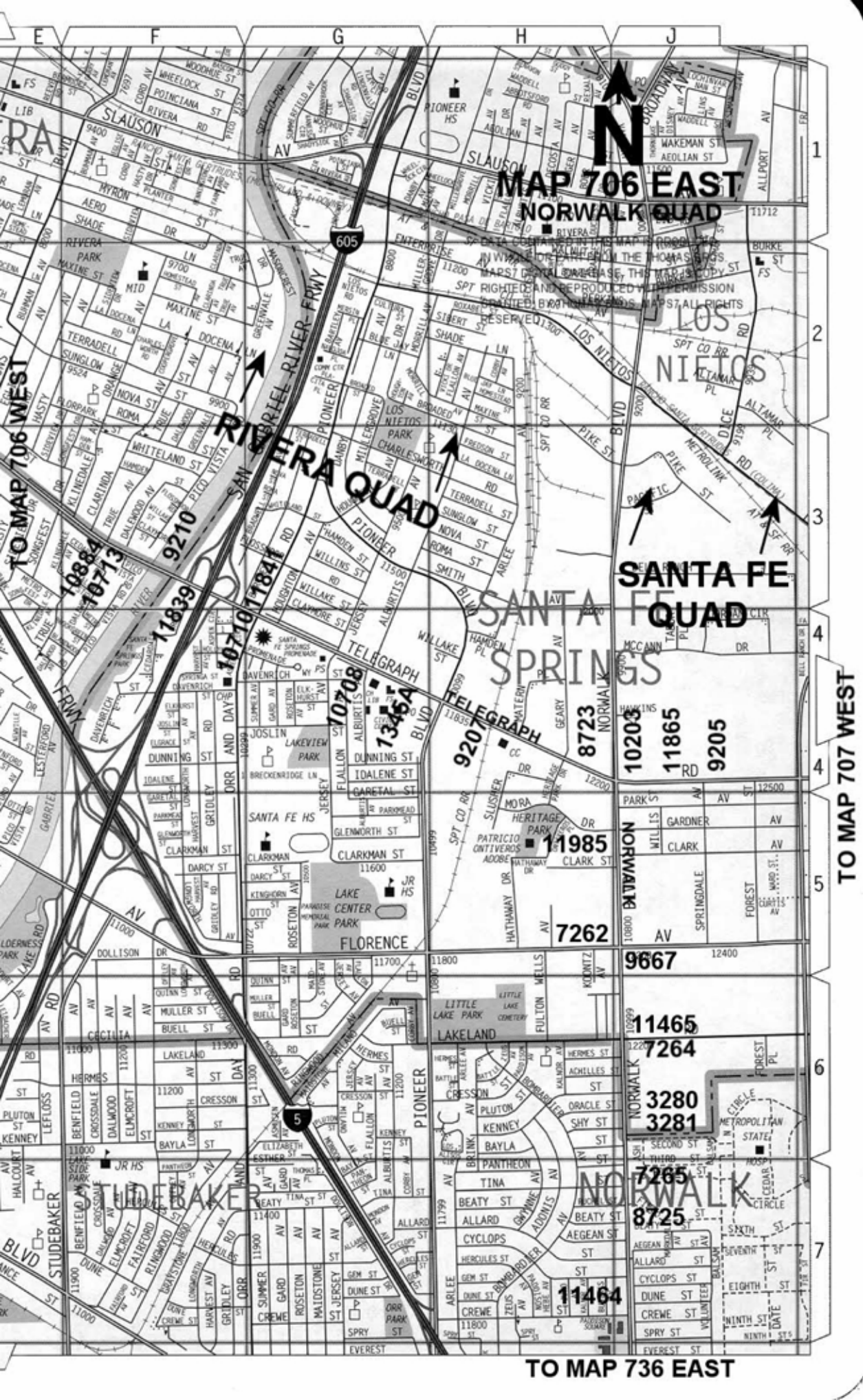
382

2327

11447

2327

11447



**MAP 706 EAST
NORWALK QUAD**

**SANTA FE
QUAD**

**SANTA FE
SPRINGS**

10203
11865
9205

11985
7262

9667
11465
7264

3280
3281

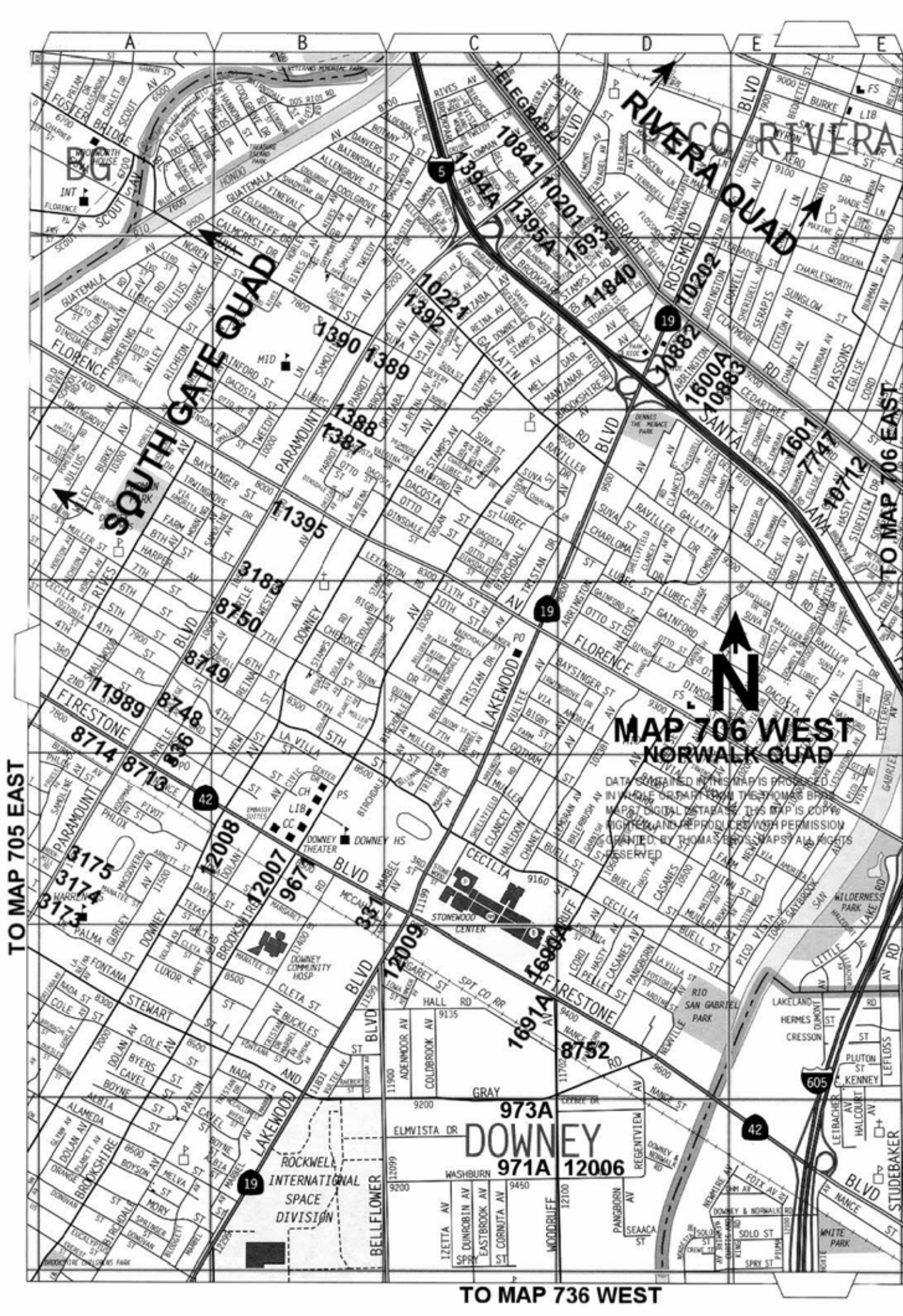
7265
8725

11464

TO MAP 736 EAST

TO MAP 706 WEST

TO MAP 707 WEST



**MAP 706 WEST
NORWALK QUAD**

SOUTH GATE QUAD

RIVERA QUAD

**973A
DOWNEY
971A 12006**

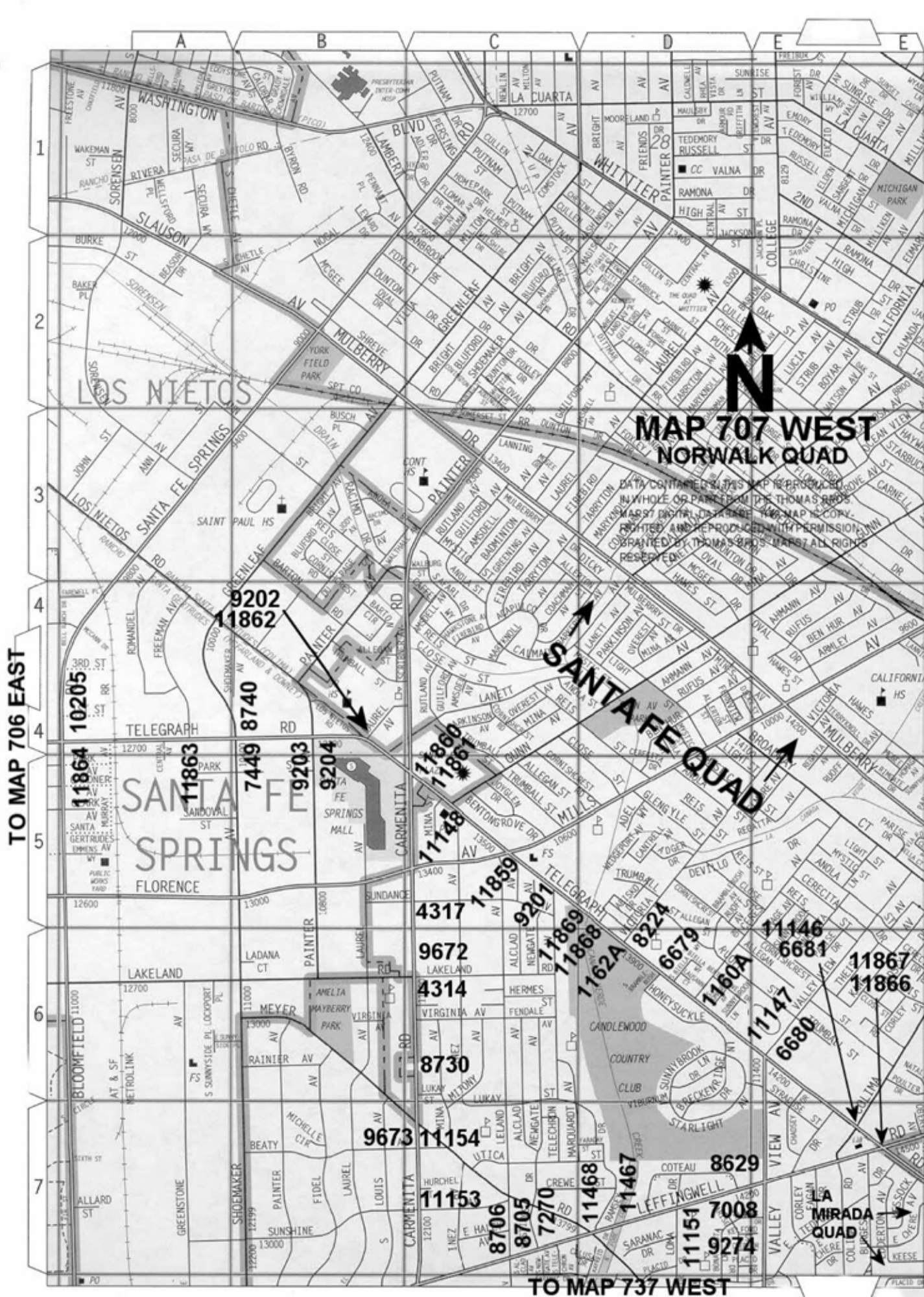


TO MAP 705 EAST

TO MAP 736 WEST

TO MAP 706 EAST

DATA CONTAINED IN THIS MAP IS PROVIDED IN LARGE OR PART FROM THE THOMAS BRIDGES MAPS DIGITAL DATABASE. THIS MAP IS COPYRIGHTED AND REPRODUCED WITH PERMISSION GRANTED BY THOMAS BRIDGES MAPS. ALL RIGHTS RESERVED.



MAP 707 WEST NORWALK QUAD

DATA CONTAINED IN THIS MAP IS PRODUCED IN WHOLE OR PART FROM THE THOMAS BROS. MAPS7 DATA OR FROM THE MAP COPY, RIGHTS AND REPRODUCTION PERMISSION GRANTED BY THOMAS BROS. MAPS7 ALL RIGHTS RESERVED.



9202
11862

8740

7449

9203

9204

71860
71861

71748

4317

9672

4314

8730

9673 **11154**

11153

11859

9207

71869
71868

1162A

8224

6679

1160A

1162A

8224

6679

1160A

11146

6681

11867
11866

1162A

8224

6679

1160A

11147

6680

8629

1162A

8224

6679

1160A

11151

7008

9274

1162A

8224

6679

1160A

11151

7008

9274

11867
11866

11147

6680

8629

11151

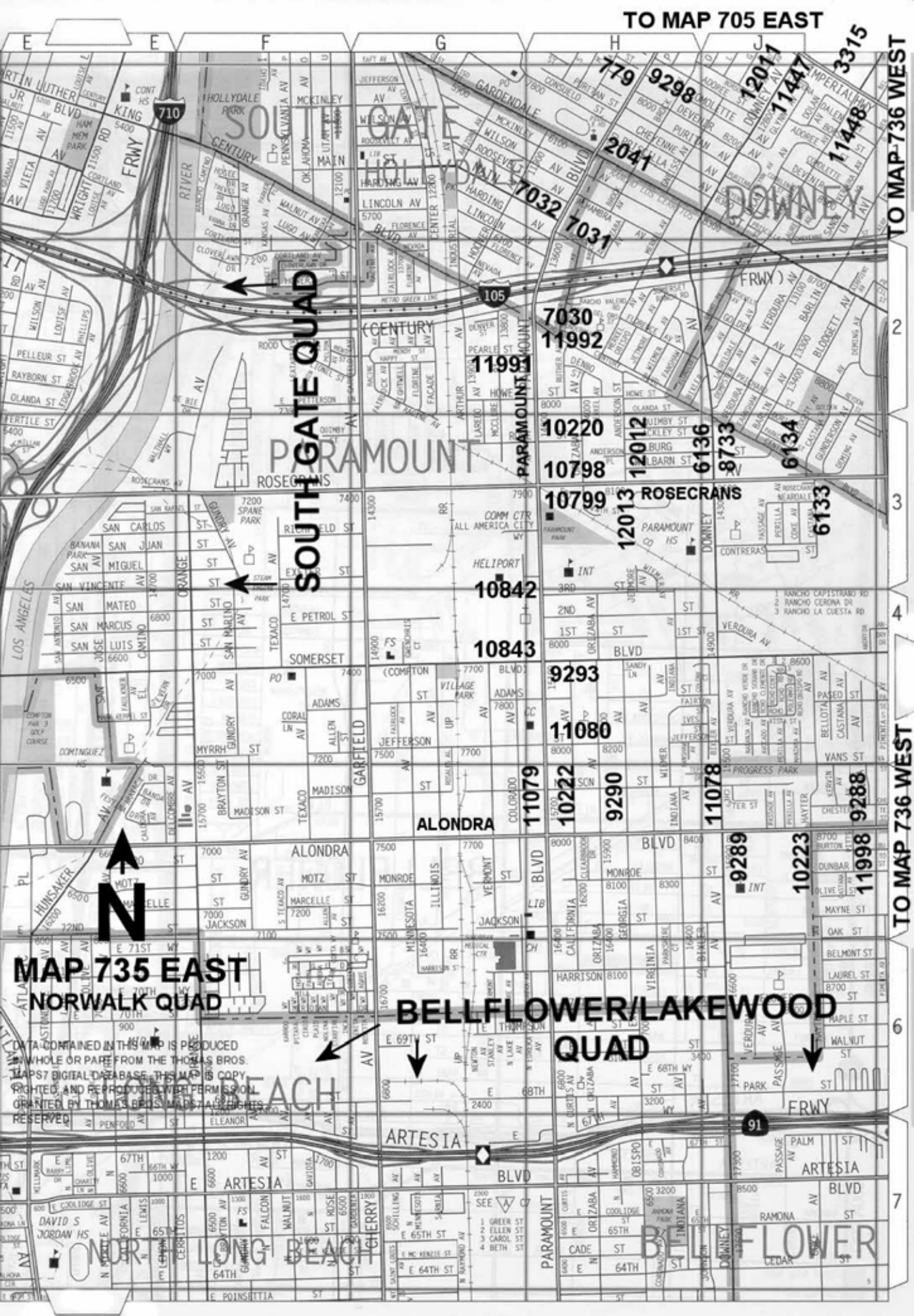
7008

9274

TO MAP 706 EAST

TO MAP 737 WEST

TO MAP 705 EAST



SOUTH GATE QUAD

**MAP 735 EAST
NORWALK QUAD**

**BELLFLOWER/LAKEWOOD
QUAD**

DATA CONTAINED IN THIS MAP IS PRODUCED BY WHOLE OR PART FROM THE THOMAS BROS. MAPS 7 DIGITAL DATABASE. THIS MAP IS A COPY, UNLESS OTHERWISE NOTED, AND REPRODUCED WITH PERMISSION GRANTED BY THOMAS BROS. MAPS. ALL RIGHTS RESERVED.



TO MAP 736 WEST

TO MAP 736 WEST

LONG BEACH

ARTESIA

BELLFLOWER

ARTESIA

ARTESIA

ARTESIA

ARTESIA

ARTESIA

ARTESIA

ARTESIA

ARTESIA

ARTESIA

ARTESIA

ARTESIA

ARTESIA

ARTESIA

ARTESIA

ARTESIA

ARTESIA

ARTESIA

ARTESIA

ARTESIA

ARTESIA

ARTESIA

ARTESIA

ARTESIA

ARTESIA

ARTESIA

ARTESIA

ARTESIA

ARTESIA

ARTESIA

ARTESIA

ARTESIA

ARTESIA

ARTESIA

ARTESIA

ARTESIA

ARTESIA

ARTESIA

ARTESIA

ARTESIA

ARTESIA

ARTESIA

ARTESIA

ARTESIA

ARTESIA

ARTESIA

ARTESIA

ARTESIA

ARTESIA

ARTESIA

ARTESIA

ARTESIA

ARTESIA

ARTESIA

ARTESIA

ARTESIA

ARTESIA

ARTESIA

ARTESIA

ARTESIA

ARTESIA

ARTESIA

ARTESIA

ARTESIA

ARTESIA

ARTESIA

ARTESIA

ARTESIA

ARTESIA

ARTESIA

ARTESIA

ARTESIA

ARTESIA

ARTESIA

ARTESIA

ARTESIA

ARTESIA

ARTESIA

ARTESIA

ARTESIA

ARTESIA

ARTESIA

ARTESIA

ARTESIA

ARTESIA

ARTESIA

ARTESIA

ARTESIA

ARTESIA

ARTESIA

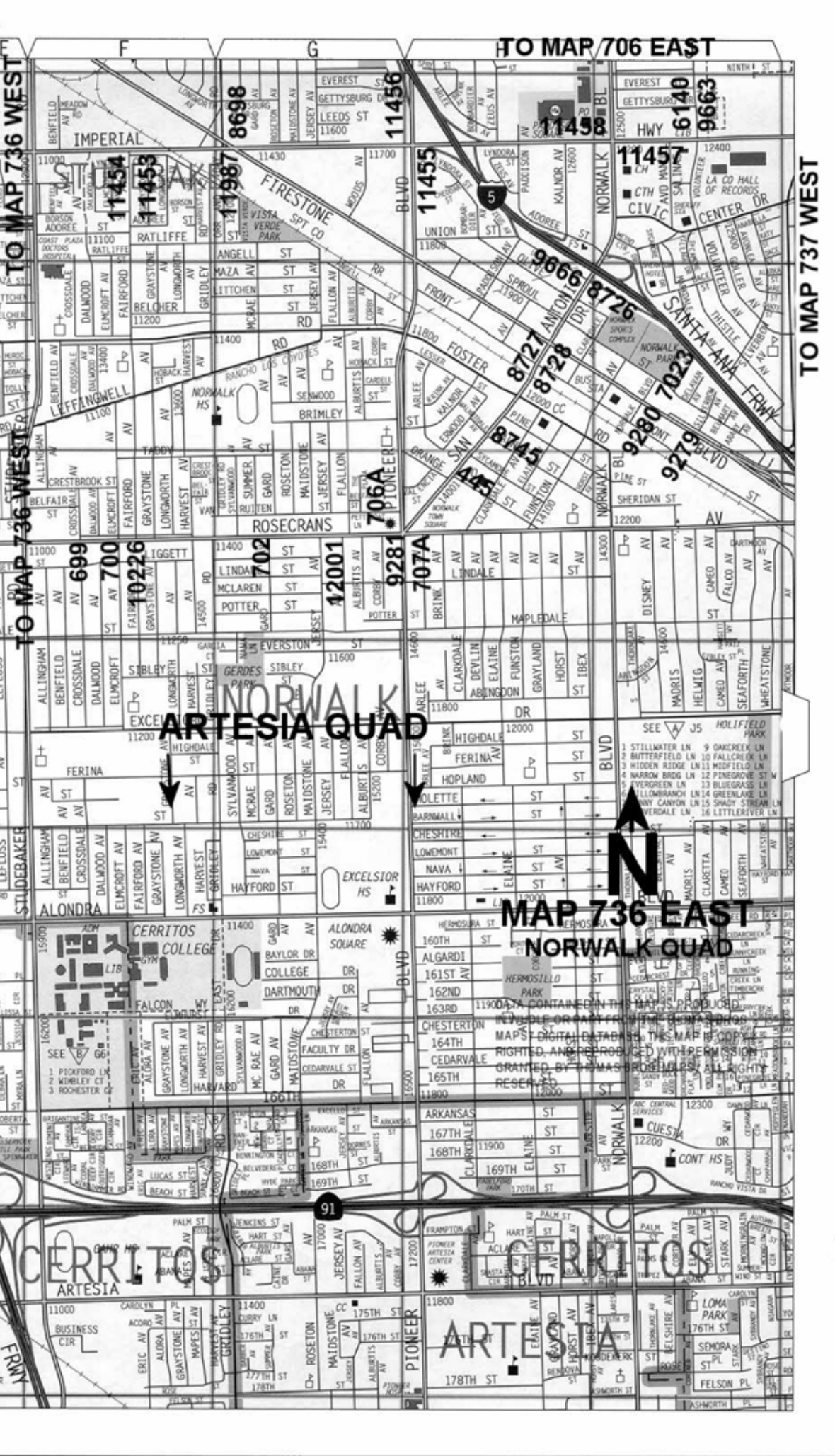
ARTESIA

ARTESIA

ARTESIA

ARTESIA

ARTESIA



TO MAP 736 WEST

TO MAP 706 EAST

TO MAP 737 WEST

ARTESIA QUAD

MAP 736 EAST
NORWALK QUAD



ALL INFORMATION CONTAINED IN THIS MAP IS THE PROPERTY OF THOMAS BROTHERS, INC. NO PART OF THIS MAP IS TO BE REPRODUCED OR TRANSMITTED IN ANY FORM OR BY ANY MEANS, ELECTRONIC OR MECHANICAL, INCLUDING PHOTOCOPYING, RECORDING, OR BY ANY INFORMATION STORAGE AND RETRIEVAL SYSTEM, WITHOUT PERMISSION IN WRITING FROM THOMAS BROTHERS, INC.

91

CERRITOS
ARTESIA

CERRITOS

ARTESIA

CERRITOS

TO MAP 705 EAST

TO MAP 706 WEST

TO MAP 735 EAST

TO MAP 735 EAST

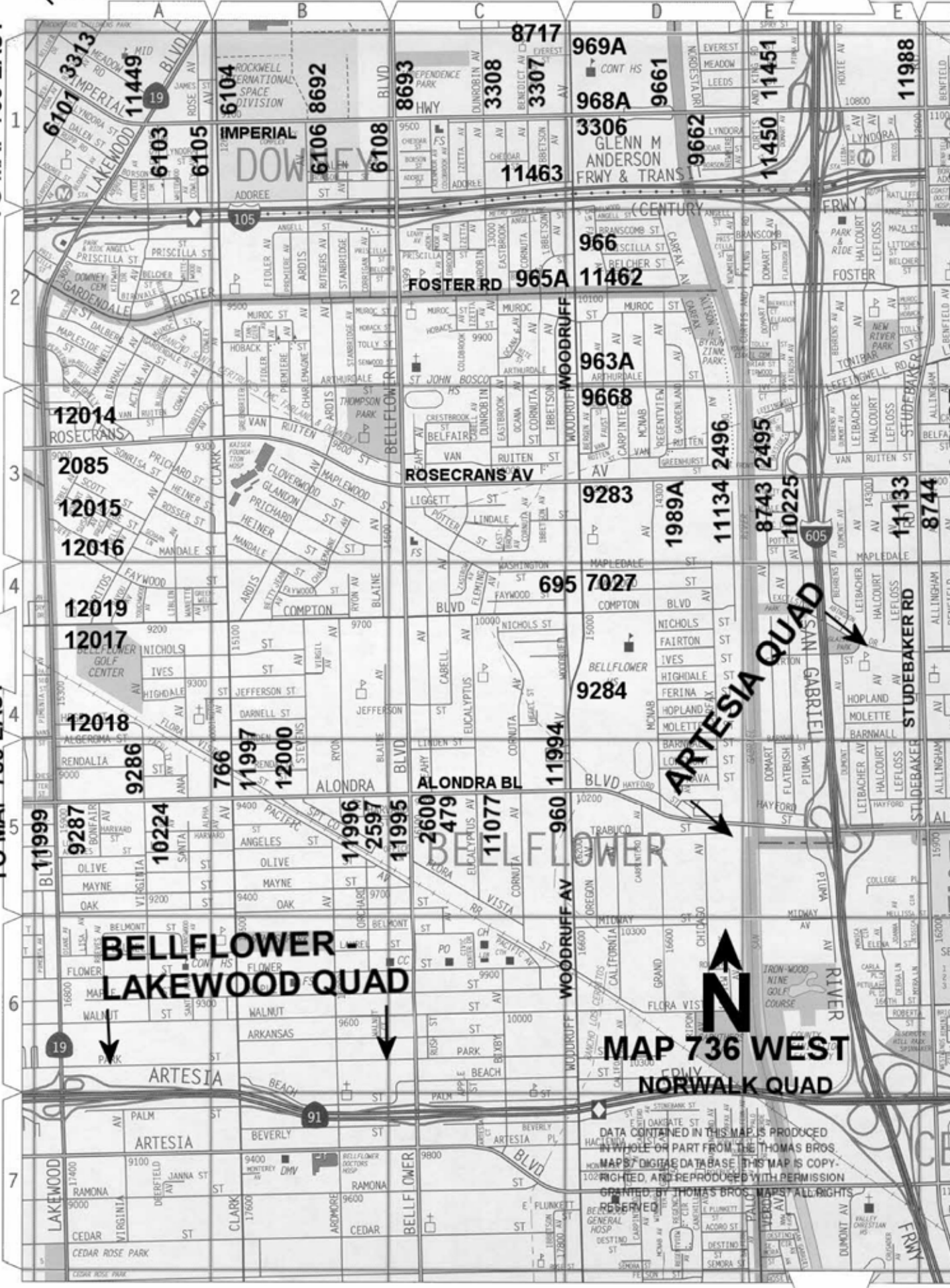
TO MAP 735 EAST

TO MAP 736 EAST

TO MAP 736 EAST

TO MAP 736 EAST

TO MAP 736 EAST



**BELLFLOWER
LAKEWOOD QUAD**

ARTESIA QUAD

**MAP 736 WEST
NORWALK QUAD**



DATA CONTAINED IN THIS MAP IS PRODUCED IN WHOLE OR PART FROM THE THOMAS BROS. MAPS DIGITAL DATABASE. THIS MAP IS COPYRIGHTED, AND REPRODUCED WITH PERMISSION GRANTED BY THOMAS BROS. MAPS. ALL RIGHTS RESERVED.



**MAP 737 WEST
NORWALK QUAD**

DATA OBTAINED IN THIS MAP IS PRODUCED IN WASHINGTON FROM THE THOMAS BROS. MAPS DIGITAL DATABASE. THIS MAP IS COPY-PROTECTED AND REPRODUCED WITH PERMISSION GRANTED BY THOMAS BROS. MAPS. ALL RIGHTS RESERVED.

QUAD YEAR	ELEV FOOT/METER	DESCRIPTION	BM NUMBER
NORWALK (2005)	113.825 34.694	L&T IN S CB 300MM(1') E/O BCR @ SE COR FIRESTONE BLVD & NASH AVE	Y 331
NORWALK (2005)	114.662 34.949	L&T IN S CB 300MM(1') E/O BCR @ SE COR FIRESTONE BLVD & MYRTLE ST	Y 336
NORWALK (2005)	98.353 29.978	L&BN IN S CB 300MM(1') E/O BCR @ SE COR IMPERIAL HWY & BROCK AVE MKD (BM ZA5)	Y 381
NORWALK (2005)	98.706 30.086	L&T @ SE COR IMPERIAL HWY & ORIZABA AVE 12M(39.4') E/O & 23M(75.5') S/O C/L INT MKD (BM)	Y 382
BASELINE (2005)	95.002 28.957	L&T IN N CB 1.5M(5') E/O BCR @ NE COR SAN ANTONIO DR & SYCAMORE ST	Y 445
BASELINE (2005)	77.377 23.585	L&T IN W CB 4.3M(14') N/O BCR @ NW COR ALONDA BLVD & LEAHY AVE	Y 479
BASELINE (2005)	83.006 25.300	RD HD SPK IN W CB 8.5M(28') N/O BCR @ NW COR WOODRUFF AVE & WASHINGTON ST	Y 695
BASELINE (2005)	86.643 26.409	L&N IN S CB 300MM(1') E/O BCR @ SE COR ROSECRANS AVE & CROSSDALE AVE	Y 699
BASELINE (2005)	86.910 26.490	L&N IN S CB 300MM(1') E/O BCR @ SE COR ROSECRANS AVE & ELMCROFT AVE	Y 700
BASELINE (2005)	87.285 26.605	L&N IN S CB 300MM(1') E/O BCR @ SE COR ROSECRANS AVE & GARD AVE	Y 702
BASELINE (2005)	88.619 27.011	CS MON IN WELL IN WALK @ NW COR ROSECRANS AVE & PIONEER BLVD 26M(85') N/O & 12.2M(40') W/O C/L INT MKD (WHITTIER C 124 1959)	Y 706A
BASELINE (2005)	89.171 27.179	RDBM MON FL IN WALK @ SW COR ROSECRANS AVE & ARLEE AVE 25M(82') S/O & 6M(20') W/O C/L INT MKD (BM 184)	Y 707A
BASELINE (2005)	70.850 21.595	L&SPK IN N CB 1.2M(4') E/O BCR @ NE COR CLARK AVE & ALONDRA BLVD	Y 766
BASELINE (2005)	110.563 33.700	L&SPK IN WK @ NW COR PARAMOUNT BLVD & COLE ST (TO THE W) 16.8M(55') N/O & 15.2M(50') W/O C/L INT	Y 773
BASELINE (2005)	92.601 28.225	L&T IN E CB 300MM(1') N/O BCR @ NE COR PARAMOUNT BL & ADOREE AVE	Y 779
BASELINE (2005)	75.735 23.084	L&T IN CB RET 300MM(1') E/O BCR @ SW COR ALONDRA BLVD & WOODRUFF AVE	Y 960
NORWALK (2005)	90.171 27.484	RDBM TAG IN W CB WOODRUFF AVE & 6M(19.7') S/O C/L PROD ARTHURDALE ST	Y 963A
NORWALK (2005)	92.683 28.250	L&T IN N CB 450M(1.5') W/O BCR @ NW COR WOODRUFF AVE & FOSTER RD	Y 965A
NORWALK (2005)	93.302 28.439	L&T IN S CB 300MM(1') W/O BCR @ SW COR WOODRUFF AVE & BELCHER ST MKD (BM)	Y 966

QUAD YEAR	ELEV FOOT/METER	DESCRIPTION	BM NUMBER
NORWALK (2005)	97.661 29.767	RDBM TAG IN S CB 1.5M(5') W/O BCR @ SE COR IMPERIAL HWY & WOODRUFF AV	Y 968A
NORWALK (2005)	100.650 30.678	LS TAG #2428 IN E CB WOODRUFF AVE ON OR NEAR C/L PROD EVEREST ST 17M(56') E/O C/L IN ENT TO SCHOOL BUS DRIVE	Y 969A
NORWALK (2005)	102.941 31.377	RDBM TAG IN W CB 14M(46') S/O BCR @ SW COR WOODRUFF AVE & WASHBURN RD	Y 971A
NORWALK (2005)	106.091 32.337	RDBM TAG IN W CB 300MM(1') S/O BCR @ SW COR WOODRUFF AVE & STEWART&GRAY RD	Y 973A
BASELINE (2005)	177.404 54.073	L&SPK IN NELY COR IN E CB 1.2M(4FT) NLY BCR 25M(82FT) NLY C/L TELEGRAPH RD & 6M(19.7FT) ELY/O C/L CERES ST MKD (WZ)	Y 1160A
BASELINE (2005)	136.528 41.614	L&T 300MM(1FT) W/O BCR @ NW COR VICTORIA AVE & TELEGRAPH RD	Y 1162A
BASELINE (2005)	129.337 39.422	L&BR IN CTR CB RET @ SE COR PARAMOUNT BL & LUBEC ST	Y 1387
BASELINE (2005)	129.552 39.488	L&BR IN CTR OF CB RET @ NE COR PARAMOUNT BLVD & LUBEC ST	Y 1388
BASELINE (2005)	132.495 40.385	L&BN IN W CB PARAMOUNT BL @ NLY P/L HSE #9603	Y 1389
BASELINE (2005)	133.970 40.834	L&T IN CB @ BCR @ SE COR PARAMOUNT BL & SUVA ST 14.6M(48') S/O & 11.6M(38') E/O C/L INT	Y 1390
BASELINE (2005)	136.339 41.556	L&T IN CB @ BCR @ SW COR PARAMOUNT BLVD & GALLATIN RD 16M(52') S/O & 11.6M(38') W/O C/L INT	Y 1392
BASELINE (2005)	140.712 42.889	SQ HD SPK IN W CB OF (SERVICE RD) PARAMOUNT BL 3.7M(12') N/O C/L PROD BROOKGREEN RD	Y 1394A
BASELINE (2005)	141.582 43.154	L&CALTRANS TAG IN E CB 300MM(1FT) S/O BCR @ SE COR PARAMOUNT BL & VISTA DEL ROSA (SER ISL) 15.2M(51FT) S/O & 12.2M(41FT) E/O C/L INT	Y 1395A
BASELINE (2005)	144.747 44.119	L&BN IN W CB 1M(3.3FT) S/O BCR @ SW COR TELEGRAPH RD & BIRCHBARK AVE	Y 1593
BASELINE (2005)	139.342 42.472	L&T IN S CB 2M(6.5FT) W/O BCR @ SE COR TELEGRAPH RD & SERAPIS AVE	Y 1600A
NORWALK (2005)	110.719 33.747	CITY ENG TAG IN E CB 1.5M(5') S/O BCR @ SE COR WOODRUFF AVE & FIRESTONE BLVD	Y 1690A
NORWALK (2005)	110.834 33.782	L&BN IN S CB FIRESTONE BLVD & 53M(174') E/O C/L PROD WOODRUFF AVE TO N	Y 1691A
BASELINE (2005)	92.175 28.095	RDBM TAG IN S CB ROSECRANS AVE 12.2M(40') S/O C/L @ ANGLE PT IN CB 152M(500') W/O BRIDGE OVER SAN GABRIEL RIVER & E/O DRWY TO PARKING LOT	Y 1989A
BASELINE (2005)	85.592 26.089	L&T IN S CB 1.8M(6') W/O BCR @ SW COR PARAMOUNT BL & GARDENDALE ST	Y 2041

QUAD YEAR	ELEV FOOT/METER	DESCRIPTION	BM NUMBER
NORWALK (2005)	90.711 27.649	L&BN IN CONC BASE OF N GATE POST OF ENT OF ABC CONSTRUCTION YARD @ 14346 LAKEWOOD BLVD 105FT N C/L CENTURY BLVD PROD	Y 2085
BASELINE (2005)	101.005 30.786	L&BN IN N CB ROSECRANS AVE @ NE COR BRIDGE OVER SAN GABRIEL RIVER 7M(23') N/O C/L & 300MM(1') W/O E END	Y 2495
BASELINE (2005)	103.349 31.501	L&BN IN N CB ROSECRANS AVE @ NW COR BRIDGE OVER SAN GABRIEL RIVER 7M(23') N/O C/L & 300MM(1') W/O E END	Y 2496
BASELINE (2005)	75.530 23.022	L&BR IN N CB 1.2M(4') W/O BCR @ NW COR ALONDRA BLVD & BLAINE AVE	Y 2597
BASELINE (2005)	76.322 23.263	L&BN IN S CB 300MM(1') W/O BCR @ SW COR ALONDRA BL & BELLFLOWER BL	Y 2600
BASELINE (2005)	96.802 29.505	L&SPK N CB 1M(3.3FT) E/O BCR @ NE COR STAGE RD & VALLEY VIEW AVE MKD (RBM 1)	Y 2776A
BASELINE (2005)	96.850 29.520	USC&GS MON FL 2.7M(9FT) E/O BCR 450MM(1.5FT) N/O CF @ NE COR VALLEY VIEW AVE & STAGE RD MKD (K 788 1945)	Y 2777A
BASELINE (2005)	96.316 29.357	L&BN IN E CB 25M(82FT) N/O BCR @ NE COR VALLEY VIEW AVE & MANSA DR (@ CTR BRIDGE OVER MILAN CREEK)	Y 2782B
BASELINE (2005)	96.784 29.500	CS MON IN WELL 300MM(1FT) E/O E CF 600MM(2FT) N/O BCR @ NE COR VALLEY VIEW AVE & FOSTER RD MKD (BM 1-6A 1961)	Y 2785A
BASELINE (2005)	108.046 32.933	L&BN IN E CB 300MM(1FT) N/O BCR @ NE COR VALLEY VIEW AVE & ADOREE ST	Y 2786A
BASELINE (2005)	106.487 32.457	L&T IN S CB 2.4M(8') W/O BCR @ SW COR PARAMOUNT BL & SPRINGER ST	Y 3168
BASELINE (2005)	112.439 34.272	L&BR IN S CB 300MM(1') W/O BCR @ SW COR PARAMOUNT BLVD & DE PALMA ST	Y 3173
BASELINE (2005)	113.484 34.590	L&BR IN N CB 300MM(1') W/O BCR @ NW COR CLETA ST & PARAMOUNT BLVD	Y 3174
BASELINE (2005)	114.309 34.841	L&T IN S CB 600MM(2') W/O BCR @ SW COR BROOKMILL RD & PARAMOUNT BLVD	Y 3175
BASELINE (2005)	126.102 38.436	L&T IN W CB 600MM(2') S/O BCR @ SW COR PARAMOUNT BL & FARM ST	Y 3183
NORWALK (2005)	123.623 37.680	L&T IN W CB NORWALK BLVD 300MM(1') N/O CB RET @ NW COR ORACLE ST & NORWALK BLVD	Y 3280
NORWALK (2005)	122.310 37.280	L&SPK IN N CB 1M(3.3') W/O BCR @ NW COR SHY ST & NORWALK BLVD	Y 3281
NORWALK (2005)	97.314 29.661	L&BN IN S CB 600MM(2') W/O BCR @ SW COR IMPERIAL HWY & WOODRUFF AVE	Y 3306
NORWALK (2005)	96.607 29.446	L&T IN S CB IMPERIAL HWY ON C/L PROD CORNUTA AVE (FROM THE S)	Y 3307

QUAD YEAR	ELEV FOOT/METER	DESCRIPTION	BM NUMBER
NORWALK (2005)	95.722 29.176	L & T IN CTR CB RET @ W END OF PKWY 9M(29.5') E/O C/L DUNROBIN AVE & 14M(46') S/O C/L IMPERIAL HWY	Y 3308
NORWALK (2005)	99.329 30.276	L&T IN N CB SERVICE RD 300MM(1') E/O BCR @ SE COR IMPERIAL HWY VERDURA AVE	Y 3313
NORWALK (2005)	100.959 30.772	L&BN S CB SERVICE RD IMPERIAL HWY 600MM(2') E/O DRWY HSE #8402 24M(79') S/O C/L IMPERIAL HWY NR C/L PROD DOLAN AVE	Y 3315
NORWALK (2005)	168.965 51.501	L&BR IN S CB 3M(10') W/O BCR @ SW COR CARMENITA RD & LAKELAND RD	Y 4314
NORWALK (2005)	170.982 52.115	L&T 1M(3.3') N/O S EDGE CONC DRWY TO HSE #10762 17M(56') E/O C/L CARMENITA RD & 38M(125') N/O C/L SUNDANCE AVE	Y 4317
NORWALK (2005)	99.303 30.268	L&BR IN N CB SERV RD 300MM(1') W/O BCR @ SW COR IMPERIAL HWY & VERDURA AVE 16M(52') S/O & 12M(39') W/O C/L INT	Y 6101
NORWALK (2005)	97.167 29.617	L&T 300MM(1') S/O BCR @ NW COR IMPERIAL HWY & LAKEWOOD BLVD	Y 6103
NORWALK (2005)	96.430 29.392	L&T IN CB RET 3M(10') E/O BCR @ NW COR IMPERIAL HWY & CLARK AVE	Y 6104
NORWALK (2005)	96.219 29.328	RDBM TAG IN S CB 1.5M(5') W/O BCR @ SE COR IMPERIAL HWY & CLARK AVE	Y 6105
NORWALK (2005)	94.358 28.760	L&T IN S CB 1.5M(5') E/O BCR @ SW COR IMPERIAL HWY & ARDIS AVE	Y 6106
NORWALK (2005)	95.782 29.194	L&BN IN S CB 1M(3.3') W/O BCR @ SW COR BELLFLOWER BLVD & IMPERIAL HWY	Y 6108
NORWALK (2005)	88.046 26.837	L&T N CB ROSECRANS AVE 40FT N C/L @ OR NEAR C/L PROD CASTANA AVE TO THE S	Y 6133
NORWALK (2005)	87.563 26.689	L&T N CB ROSECRANS AVE 42FT N C/L & 34FT W C/L CASTANA AVE TO THE NORTH	Y 6134
NORWALK (2005)	80.367 24.496	RD HD SPK W CB 5FT S BCR @ SW COR ROSECRANS AVE & DOWNEY AVE 87FT S & 30FT W C/L INT MKD(XM98)	Y 6136
NORWALK (2005)	105.624 32.194	L & BN 300MM(1') E/O BCR @ NE COR IMPERIAL HWY & VOLUNTEER AVE	Y 6140
BASELINE (2005)	169.478 51.657	L&T CTR CB RET OF ISLE @ ENT TO CANDLEWOOD C C @ C/L BRAMBLEBUSH AVE & 14M(46FT) S/O C/L TELEGRAPH RD	Y 6679
BASELINE (2005)	198.416 60.477	RDBM TAG IN NLY CB 5.5M(18FT) ELY/O BCR @ NELY COR VALLEY VIEW AVE & TELEGRAPH RD	Y 6680
BASELINE (2005)	189.416 57.734	L&T IN SWLY CB RET 3M(10FT) ELY/O BCR 16.5M(54FT) WLY C/L COLIMA RD & 12.8M(42FT) SLY/O C/L TELEGRAPH RD	Y 6681
BASELINE (2005)	164.558 50.157	L&BR IN E CB 3.7M(12FT) S/O BCR @ NE COR VALLEY VIEW AVE & LEFFINGWELL RD	Y 7008

QUAD YEAR	ELEV FOOT/METER	DESCRIPTION	BM NUMBER
BASELINE (2005)	68.103 20.758	COE BR CAP FL 1.5M(5') S/O SLY CF @ SE COR BRIDGE OVER N FORK COYOTE CREEK 6.7M(22') S/O C/L FIRESTONE BLVD S SERV RD SANTA ANA FRWY MKD (CC 37 1959)	Y 7016
BASELINE (2005)	80.811 24.631	RDBM TAG IN S END HDWL @ NE COR FIRESTONE BLVD & CARMENITA RD 30.5M(100') N/O & 9M(30') E/O APPROX C/L INT	Y 7020
BASELINE (2005)	96.388 29.379	STATE CALIF BR DISC IN CB 8M(26') S/O BCR @ SW COR FIRESTONE BLVD & NORWALK BLVD MKD (22-B-41)	Y 7023
BASELINE (2005)	82.701 25.207	L&T IN W CB 1.8M(6') S/O BCR @ SW COR WOODRUFF AVE & WASHINGTON ST	Y 7027
BASELINE (2005)	80.149 24.429	CS MON IN C. B. @ SW COR PARAMOUNT BL & CENTURY BL 30.5M(100FT) S/O & 11.9M(40FT) W/O C/L INT MKD (BM 6-7 1961 RE 5869)	Y 7030
BASELINE (2005)	82.814 25.242	CS MON IN C. B. @ NW COR PARAMOUNT BL & HARDING AVE MKD (BM 7-3A 1961)	Y 7031
BASELINE (2005)	107.773 32.849	CS MON IN WELL 200MM(0.7') DN 12.2M(40') W/O C/L PARAMOUNT BLVD & 12.8M(42') S/O C/L PROD ALAMEDA ST MKD (BELL G 9 RM 1 RE 5869)	Y 7033
NORWALK (2005)	135.751 41.377	L&BN IN W CB 600MM(2') S/O BCR @ SW COR FLORENCE AVE & NORWALK BL	Y 7262
NORWALK (2005)	129.236 39.391	L&BN IN W CB 600M(2') S/O BCR @ SW COR NORWALK BLVD & LAKELAND RD MKD (BM)	Y 7264
NORWALK (2005)	116.086 35.383	CSBM MON IN WELL 300MM(1') DN 14M(46') E/O C/L NORWALK BLVD & 12M(39') S/O C/L TINA ST MKD (BM 2-9A RE 5869 1961)	Y 7265
NORWALK (2005)	111.606 34.018	L&T IN N CB 3.7M(12') E/O BCR @ NE COR LEFFINGWELL RD & MEYER RD	Y 7270
BASELINE (2005)	161.652 49.272	L&BN IN W CB 600MM(2FT) N/O BCR @ NW COR TELEGRAPH RD & GREENLEAF AVE	Y 7449
BASELINE (2005)	69.980 21.330	L&BN IN S CB 8.7M(29') W/O C/L WLY MOST DRWY TO BLDG #13750 FIRESTONE BL (S SIDE 5 FRWY) 6M(20') S/O C/L IN FRONT OF PP #1119957E	Y 7497
BASELINE (2005)	71.176 21.695	L&BN IN S CB 17M(56') W/O C/L ELY MOST DRWY TO BLDG #13700 FIRESTONE BL (SLY SIDE 5 FRWY) 6M(20') S/O C/L & 402M W/O MARQUARDT AVE	Y 7498
BASELINE (2005)	82.110 25.027	L&BN IN S CB FIRESTONE BLVD (S SIDE 5 FRWY) 7.6M(25FT) W/O BCR 6M(20FT) S/O C/L & 27.4M(90FT) W/O C/L CARMENITA RD OFF-RAMP	Y 7499
BASELINE (2005)	79.789 24.320	L&BN IN CTR OF HDWL 7M(23') S/O C/L FIRESTONE BLVD (S SIDE 5 FRWY) IN FRONT OF BLDG #13146 & 12.2M(40') E/O LOADING DOCK 483M W/O CARMENITA RD	Y 7500
BASELINE (2005)	80.796 24.627	L&BN IN CONC FTG OF 2.4M(8') CHAIN LINK FENCE COR 13.4M(44') W/O C/L SHOEMAKER AVE & 11M(36') S/O C/L SPRR (S/O FIRESTONE BLVD)	Y 7502

QUAD YEAR	ELEV FOOT/METER	DESCRIPTION	BM NUMBER
BASELINE (2005)	142.876 43.549	LACS MON IN S END C. B. 14M(46FT) N/O BCR @ NW COR TELEGRAPH RD & PASSONS BLVD INT MKD (BM 4-15A 1968)	Y 7747
BASELINE (2005)	110.991 33.830	CS MON IN WELL 200MM(0.7') DN @ SW COR PARAMOUNT BLVD & STEWART & GRAY RD 15.2M(50') S/O & 15.2M(50') W/O C/L INT 300MM(1') B/W MKD (RM-1 1960 RE 5869)	Y 7763
BASELINE (2005)	110.296 33.618	RDBM TAG IN W CB 300MM(1') S/O BCR @ SW COR PARAMOUNT BLVD & BRUNACHE ST	Y 7764
BASELINE (2005)	99.590 30.355	CS MON IN WELL 200MM(0.7') DN @ SW COR PARAMOUNT BLVD & IMPERIAL HWY 14M(46') S/O & 17M(56') W/O C/L INT MKD (RM-4 BELL F 10A 1960 RE 5869)	Y 7766
BASELINE (2005)	139.832 42.621	L&T IN NLY CB 300MM(1FT) ELY/O BCR @ NE COR VICTORIA AVE & TELEGRAPH RD	Y 8224
BASELINE (2005)	159.671 48.668	L&BN IN E CB 300MM(1FT) S/O BCR @ SE COR VALLEY VIEW AVE & LEFFINGWELL RD	Y 8629
BASELINE (2005)	105.095 32.033	RDBM TAG IN W CB VALLEY VIEW AVE & 8M S/O C/L PROD ADOREE ST (FR THE E)	Y 8632
BASELINE (2005)	97.275 29.650	L&T IN W CB 600MM(2FT) S/O BCR @ SW COR VALLEY VIEW AVE & FOSTER RD	Y 8633
BASELINE (2005)	115.425 35.182	L&BN IN E CB 300MM(1FT) N/O BCR @ NE COR VALLEY VIEW AVE & ROSECRANS AVE	Y 8634
BASELINE (2005)	113.832 34.696	L&T IN CB RET 6M(19.7FT) N/O BCR @ SW COR VALLEY VIEW AVE & ROSECRANS AVE	Y 8635
BASELINE (2005)	81.488 24.838	RDBM TAG IN N CB 600MM(2FT) W/O BCR @ NW COR VALLEY VIEW AVE & GANNET ST	Y 8637
BASELINE (2005)	76.181 23.220	CS MON FL IN CONC ABUT 2M(6.5FT) E/O CF @ NE COR BRIDGE #1262 OVER LA MIRADA CREEK 14M(46FT) E/O C/L VALLEY VIEW AVE MKD (BM 1-2A 1968 RE 5869)	Y 8638
BASELINE (2005)	75.951 23.150	L&BN IN CHIS SQ IN W CB 12M(40FT) W/O C/L VALLEY VIEW AVE @ C/L OF BRIDGE OVER LA MIRADA CREEK	Y 8639
NORWALK (2005)	94.382 28.768	L&T IN N CB IMPERIAL HWY 12M(39.4') N/O C/L & 30M(98') E/O C/L ARDIS AVE	Y 8692
NORWALK (2005)	95.993 29.259	RDBM TAG IN N CB 4.6M(15') E/O BCR @ NE COR IMPERIAL HWY & BELLFLOWER BLVD	Y 8693
NORWALK (2005)	102.897 31.363	RDBM TAG IN N CB 4M(13') W/O BCR @ NW COR FIRESTONE BLVD & IMPERIAL HWY	Y 8698
NORWALK (2005)	115.348 35.158	RDBM TAG IN S CB @ BCR @ SE COR LEFFINGWELL RD & CARMENITA RD	Y 8703
NORWALK (2005)	117.399 35.783	RDBM TAG IN N CB 1M(3.3') E/O BCR @ NE COR LEFFINGWELL RD & CARMENITA AVE	Y 8704
NORWALK (2005)	113.822 34.693	L&BR IN N CB 300MM(1') W/O BCR @ NW COR LEFFINGWELL RD & LELAND AVE	Y 8705

QUAD YEAR	ELEV FOOT/METER	DESCRIPTION	BM NUMBER
NORWALK (2005)	114.859 35.009	RDBM TAG IN N CB 1.8M(6') E/O BCR @ NE COR LELAND AVE & LEFFINGWELL RD	Y 8706
BASELINE (2005)	118.726 36.188	CSBM MON FL IN C. B. @ NW COR FIRESTONE BLVD & PARAMOUNT BLVD 38M(125') N/O & 12.5M(41') W/O C/L INT MKD (BM 7-8B 1970)	Y 8713
BASELINE (2005)	117.982 35.961	RDBM TAG IN N CB 300MM(1') E/O BCR @ NE COR FIRESTONE BL & PARAMOUNT BL	Y 8714
NORWALK (2005)	100.164 30.530	RDBM TAG IN W CB 300MM(1FT) N/O BCR @ NW COR WOODRUFF AVE & EVEREST ST	Y 8717
BASELINE (2005)	143.477 43.732	CS MON IN WELL 300MM(1FT) W/O CF 600MM(2FT) S/O BCR @ SW COR NORWALK BLVD & TELEGRAPH RD MKD (BM 2-11B 1970 RE 5869)	Y 8723
NORWALK (2005)	115.778 35.289	RDBM TAG IN W CB 1.2M(4') N/O BCR @ NW COR NORWALK BLVD & BEATY ST @ S END C. B.	Y 8725
NORWALK (2005)	101.702 30.999	LACS MON IN WELL 200MM(0.7') DN @ NE COR UNION ST & SAN ANTONIO DR 13.4M(44') N/O & 13M(43') E/O C/L INT MKD (BM 2-8 B 1970)	Y 8726
BASELINE (2005)	98.867 30.135	RDBM TAG IN N CB 2.7M(9') E/O BCR @ NE COR FIRESTONE BLVD & SAN ANTONIO DR	Y 8727
BASELINE (2005)	98.475 30.015	LA. CO. DPW TAG IN CB RET 2.7M(9FT) E/O BCR @ SW COR SAN ANTONIO DR & FIRESTONE BL	Y 8728
NORWALK (2005)	167.087 50.928	RDBM TAG IN W CB CARMENITA RD OPP HSE #11320 @ PP #1334051E 184M(600') N/O LUKAY ST	Y 8730
NORWALK (2005)	80.901 24.659	RDBM TAG 30FT E BCR @ SE COR ROSECRANS AVE & DOWNEY RD 40FT S & 96FT E C/L INT	Y 8733
BASELINE (2005)	161.003 49.074	CS MON IN WELL 300MM(1FT) W/O W CF @ BCR OF NW COR TELEGRAPH RD & GREENLEAF AVE MKD (BM 4-10C 1970 RE 5869)	Y 8740
BASELINE (2005)	101.042 30.798	COE MON IN E ABUT SE COR BRIDGE OVER SAN GABRIEL RIVER 9M(29.5') S/O C/L ROSECRANS AVE MKD (SG 22 1959)	Y 8743
BASELINE (2005)	85.285 25.995	CS BM MON IN WELL 1.2M(4') N/O CF 3M(10') W/O BCR @ NW COR ROSECRANS AVE & STUDEBAKER RD MKD (BM 6-2A 1970 RE 5869)	Y 8744
BASELINE (2005)	96.496 29.412	L&T IN N CB 300MM(1') E/O BCR @ NELY COR PINE ST & SAN ANTONIO DR	Y 8745
BASELINE (2005)	79.723 24.300	LACS BM MON IN WELL 200MM(0.7') DN @ NE COR FIRESTONE BLVD & CARMENITA RD 38.4M(126') E/O & 10M(32.5') N/O C/L INT MKD (BM 2-2C 1970 RE 5869)	Y 8747
BASELINE (2005)	119.395 36.392	RAM SET IN E CB PARAMOUNT BLVD & 10.7M(35FT) S/O C/L PROD 4TH PLACE	Y 8748
BASELINE (2005)	119.481 36.418	CS MON IN WELL 200MM(0.7') DN 300MM(1') W/O CF @ NW COR PARAMOUNT BL & 5TH ST MKD (BM 7-9B 1970 RE 5869)	Y 8749
BASELINE (2005)	124.139 37.838	RDBM TAG IN W CB 300MM(1') S/O BCR @ SW COR PARAMOUNT BL & HARPER AVE	Y 8750

QUAD YEAR	ELEV FOOT/METER	DESCRIPTION	BM NUMBER
NORWALK (2005)	108.051 32.934	CSBM MON IN WELL 200MM(0.7') DN 4M(13') S/O BCR @ SW COR WOODRUFF AVE & HALL RD MKD (BM 68-16 1970)	Y 8752
BASELINE (2005)	160.390 48.887	CSBM MON IN WELL 300MM(1FT) N/O N CF TELEGRAPH RD 6.5M(21.3FT) E/O C/L PROD TELECRON AVE MKD (BM 4-7C 1970 RE 5869)	Y 9201
BASELINE (2005)	160.576 48.944	RDBM TAG IN N CB 300MM(1FT) E/O BCR @ NE COR TELEGRAPH RD & PAINTER AVE	Y 9203
BASELINE (2005)	160.548 48.935	L&BN IN N CB 300MM(1FT) W/O BCR @ NW COR TELEGRAPH RD & PAINTER AVE	Y 9204
BASELINE (2005)	148.364 45.221	RDBM TAG IN N CB TELEGRAPH RD 8M(26FT) E/O C/L PROD SPRINGDALE AVE	Y 9205
BASELINE (2005)	146.887 44.771	FC MON FL @ NW COR OF BRIDGE MKD 1937 OVER SAN GABRIEL RIVER 8M(26FT) N/O C/L TELEGRAPH RD MKD (77-73 1952)	Y 9210
BASELINE (2005)	147.444 44.941	RDBM TAG IN W CB VALLEY VIEW AVE 13M(42.7FT) W/O C/L & 2.7M(9FT) S/O C/L CUL-DE-SAC CHERE DR (FR THE W) 322M(1150FT) S/O LEFFINGWELL RD	Y 9274
BASELINE (2005)	67.123 20.459	L&T IN S CB 5.2M(17') E/O BCR @ SE COR FIRESTONE BL & MARQUARDT AVE (S/O ALONDRA BL & FIRESTONE BL INT)	Y 9275
BASELINE (2005)	71.753 21.870	ST DIV OF HWYS TAG @ MCR @ NE COR ALONDRA BLVD & FIRESTONE BLVD	Y 9276
BASELINE (2005)	94.828 28.904	RDBM TAG IN S CB FIRESTONE BL 12.8M(42') S/O C/L & 402M(0.25MI) E/O NORWALK BL @ BLDG #12440 (W SIDE DRWY)	Y 9279
BASELINE (2005)	97.233 29.637	RAMSET & WASH IN N CB 1.2M(4') W/O BCR @ NW COR FIRESTONE BL & NORWALK BL MKD (STATE OF CALIF DIV HWYS)	Y 9280
BASELINE (2005)	89.401 27.250	L&N IN N CB 1.5M(5') W/O BCR @ NW COR ROSECRANS AVE & PIONEER BL (E END C. B.)	Y 9281
BASELINE (2005)	86.900 26.487	RAMSET IN CTR OF CB RET @ SW COR WOODRUFF AVE & ROSECRANS AVE	Y 9283
BASELINE (2005)	79.739 24.305	RDBM TAG IN W CB @ S WALL C. B. 6.4M(21') N/O BCR @ NW COR WOODRUFF AVE & WOODRUFF PL	Y 9284
BASELINE (2005)	71.892 21.913	LS TAG #2428 IN CB 3.4M(11') W/O BCR @ NW COR ALONDRA BLVD & VIRGINIA AVE	Y 9286
BASELINE (2005)	71.443 21.776	RAMSET IN CB RET 2.2M(7') W/O BCR @ NE COR ALONDRA BLVD & LAKEWOOD BLVD	Y 9287
BASELINE (2005)	70.329 21.436	L&BR IN CB RET 600MM(2') E/O BCR @ NW COR ALONDRA BLVD & PITTS AVE	Y 9288
BASELINE (2005)	68.455 20.865	CS MON IN WELL 300MM(1') B/WLK @ NE COR ALONDRA BLVD & DOWNEY AVE 18M(59') E/O & 15.5M(51') N/O C/L INT MKD (BM 6-10A 1970 RE 5869)	Y 9289

QUAD YEAR	ELEV FOOT/METER	DESCRIPTION	BM NUMBER
BASELINE (2005)	71.186 21.698	L&BN IN W CB 1.8M(6') N/O BCR @ NW COR ALONDRA BL & ORIZABA AVE	Y 9290
BASELINE (2005)	74.629 22.747	CS MON 600MM(2') B/W 300MM(1') DN @ CTR CB RET @ SW COR SOMERSET BL & PARAMOUNT BL MKD (BM 6-13A 1970 RE 5869)	Y 9293
BASELINE (2005)	111.740 34.058	L&T IN E CB 300MM(1') S/O BCR @ SE COR PARAMOUNT BL & STEWART & GRAY RD	Y 9295
BASELINE (2005)	106.005 32.310	FC TAG IN CTR OF CB RET @ NW COR PARAMOUNT BLVD & QUILL DR	Y 9296
BASELINE (2005)	92.346 28.147	L&BR IN E CB 300MM(1') S/O BCR @ SE COR PARAMOUNT BLVD & ADOREE AVE	Y 9298
NORWALK (2005)	115.286 35.139	PK NAIL IN CONC CB @ W ABUT OF BRIDGE #B968 11.6M(38') S/O C/L IMPERIAL HWY & 49M(161') W/O C/L SAN GABRIEL RIVER	Y 9661
NORWALK (2005)	115.272 35.135	PK NAIL IN CONC CB @ W ABUT OF BRIDGE #B968 11.6M(38') N/O C/L IMPERIAL HWY & 49M(161') W/O C/L SAN GABRIEL RIVER	Y 9662
NORWALK (2005)	105.707 32.220	LACS TAG 4.6M(15') W/O BCR @ SW COR IMPERIAL HWY & VOLUNTEER AVE	Y 9663
NORWALK (2005)	103.097 31.424	RDBM TAG IN W CB LEFFINGWELL RD 33M(108') N/O C/L IMPERIAL HWY & 13M(43') W/O C/L LEFFINGWELL RD	Y 9664
NORWALK (2005)	102.023 31.097	RDBM TAG IN E CB LEFFINGWELL RD 27M(89') N/O C/L IMPERIAL HWY & 13M(43') E/O C/L LEFFINGWELL RD	Y 9665
NORWALK (2005)	101.140 30.828	STATE OF CALIF DIV OF HWY MON IN E CB @ BCR @ SE COR SAN ANTONIO DR & UNION ST	Y 9666
NORWALK (2005)	136.173 41.506	RDBM TAG IN N WALL C. B. 6M(20') N/O BCR @ NW COR NORWALK BLVD & FLORENCE AVE	Y 9667
NORWALK (2005)	90.189 27.490	RDBM TAG IN E CB 1.5M(5') S/O BCR @ SE COR WOODRUFF AVE & ARTHURDALE ST	Y 9668
NORWALK (2005)	116.996 35.660	RDBM TAG IN E CB 300MM(1') N/O BCR @ SE COR BROOKSHIRE AVE & FIRESTONE BLVD	Y 9671
NORWALK (2005)	169.481 51.658	L&T IN E CB 600MM(2') S/O BCR @ SE COR CARMENITA RD & LAKELAND RD	Y 9672
NORWALK (2005)	159.498 48.615	L&T IN E CB 900MM(3') N/O BCR @ NE COR CARMENITA RD & BEATY AVE	Y 9673
BASELINE (2005)	63.980 19.501	L&BR IN N CB 2.4M(8FT) E/O BCR @ NE COR VALLEY VIEW AVE & FIRESTONE BLVD (SOUTH SIDE OF 5 FRWY)	Y 10028
BASELINE (2005)	144.996 44.195	CALIF DIV OF HWY 50MM(2IN) DISC IN CB 1.2M(4FT) W/O BCR @ NW COR TELEGRAPH RD & PARAMOUNT BLVD MKD (BELL K-4 1941 NO 5 1972)	Y 10201
BASELINE (2005)	141.079 43.001	RDBM TAG IN S CB 300MM(1FT) E/O BCR @ NE COR ROSEMEAD BLVD & TELEGRAPH RD	Y 10202

QUAD YEAR	ELEV FOOT/METER	DESCRIPTION	BM NUMBER
BASELINE (2005)	144.605 44.076	RDBM TAG IN S CB 300MM(1FT) E/O BCR @ SE COR NORWALK BLVD & TELEGRAPH RD	Y 10203
BASELINE (2005)	154.597 47.121	RDBM TAG IN S CB 300MM(1FT) W/O BCR @ SW COR TELEGRAPH RD & BLOOMFIELD AVE	Y 10205
BASELINE (2005)	160.549 48.935	RDBM TAG IN N CB RET 600MM(2FT) W/O BCR @ NE COR LAUREL AVE & TELEGRAPH RD	Y 10207
BASELINE (2005)	78.701 23.988	DPW BM TAG W CB 300MM(1') N/O BCR @ SW COR PARAMOUNT BLVD & ROSE ST	Y 10220
BASELINE (2005)	136.749 41.681	DPW BM TAG E CB 300MM(1') S/O BCR @ NE COR PARAMOUNT BLVD & GALLATIN RD	Y 10221
BASELINE (2005)	70.636 21.530	RDBM TAG IN S CB 2.4M(8') W/O BCR @ SE COR ALONDRA BLVD & PARAMOUNT BLVD	Y 10222
BASELINE (2005)	69.530 21.193	DPW BM TAG IN S CB 300MM(1') W/O BCR @ SW COR HAYTER AVE & ALONDRA BLVD	Y 10223
BASELINE (2005)	71.728 21.863	DPW BM TAG IN N CB 300MM(1') E BCR @ NE COR ALONDRA BLVD & VIRGINIA AVE	Y 10224
BASELINE (2005)	87.165 26.568	DPW BM TAG N CB 300MM(1') W/O BCR @ NW COR FLATBUSH AVE & ROSECRANS AVE	Y 10225
BASELINE (2005)	86.887 26.483	DPW BM TAG N CB 300MM(1') E/O BCR @ NE COR FAIRFORD AVE & ROSECRANS AVE (SERV RD)	Y 10226
BASELINE (2005)	66.330 20.217	DPW BM TAG IN CONC BASE TRAFFIC SIGNAL 8M(26') N/O C/L PROD FIRESTONE BLVD & 13M(43') W/O C/L VALLEY VIEW AVE (S SIDE (5) SANTA ANA FRWY)	Y 10227
BASELINE (2005)	119.449 36.408	MWD RP TAG IN S CB RET 1.5M(5FT) E/O BCR @ SW COR VALLEY VIEW AVE & IMPERIAL HWY	Y 10240
BASELINE (2005)	134.879 41.111	LACO BM TAG IN N CB 300MM(1FT) E/O BCR @ NE COR ORR & DAY RD & TELEGRAPH RD	Y 10710
BASELINE (2005)	142.403 43.405	RAM SET IN S CB 10.5M(34.4FT) W/O BCR @ SW COR TELEGRAPH RD & TRUE AVE	Y 10712
BASELINE (2005)	140.667 42.875	CAL TRANS 50MM(2IN) BR DISC IN SW CB RET 4M(13FT) E/O BCR TRUE AVE & TELEGRAPH RD (E END ISLE) 13.4M(44FT) S/O & 8.8M(29FT) W/O C/L INT MKD WHITTIER A-6 1941 NO5 1972	Y 10713
BASELINE (2005)	78.944 24.062	LACO BM TAG W CB 3.6M(12') N/O BCR @ NW COR ROSECRANS AVE & PARAMOUNT BL	Y 10798
BASELINE (2005)	78.760 24.006	LACO BM TAG IN E CB 300MM(1') N/O BCR @ NE COR ROSECRANS AVE & PARAMOUNT BL	Y 10799
BASELINE (2005)	144.762 44.124	CAL TRANS 100MM(4IN) BR DISC IN B/W NR MCR @ SW COR TELEGRAPH RD & PARAMOUNT BLVD MKD (BELL K-4 1941 NO 4 1972)	Y 10841
BASELINE (2005)	73.901 22.525	DPW BM TAG IN E CB 1M(3.3') S/O BCR @ SE COR PARAMOUNT BLVD & 3RD ST	Y 10842

QUAD YEAR	ELEV FOOT/METER	DESCRIPTION	BM NUMBER
BASELINE (2005)	75.214 22.925	DPW BM TAG IN W CB 1M(3.3') N/O BCR @ NW COR PARAMOUNT BL & SOMERSET BL	Y 10843
BASELINE (2005)	141.106 43.009	US ARMY CORP OF ENG 100MM(4IN) BR DISC IN E CB 1.8M(6FT) N/O BCR @ NE COR TELEGRAPH RD & ROSEMEAD BLVD MKD (WS 101 1981 LAAO)	Y 10882
BASELINE (2005)	139.490 42.517	DPW BM TAG IN W CB 1M(3.3FT) N/O BCR @ NW COR TELEGRAPH RD & SERAPIS AVE	Y 10883
BASELINE (2005)	140.751 42.901	RAM SET IN S CB 10.5M(34.4FT) W/O BCR @ SW COR TELEGRAPH RD & TRUE AVE	Y 10884
BASELINE (2005)	77.873 23.736	DPW BM TAG IN E CB 1M(3.3') N/O BCR @ NE COR ALONDRA BLVD & EUCALPTUS ST	Y 11077
BASELINE (2005)	68.228 20.796	DPW BM TAG IN N CB 13.7M(45') W/O BCR NR E END C. B. @ NW COR ALONDRA BLVD & DOWNEY AVE	Y 11078
BASELINE (2005)	70.576 21.512	DPW BM TAG IN E CB 3M(10') N/O BCR @ NE COR ALONDRA BLVD & PARAMOUNT BLVD	Y 11079
BASELINE (2005)	72.712 22.163	DPW BM TAG IN W CB 1M(3.3') N/O BCR @ NW COR PARAMOUNT BLVD & JEFFERSON ST	Y 11080
BASELINE (2005)	86.048 26.228	DPW BM TAG IN N CB 18M(59') E/O BCR @ NE COR ROSECRANS AVE & STUDEBAKER RD	Y 11133
BASELINE (2005)	103.354 31.502	COE MON IN W ABUT SW COR BRIDGE OVER SAN GABRIEL RIVER 9M(29.5') S/O C/L ROSECRANS AVE MKD (SG 21 1959)	Y 11134
BASELINE (2005)	97.213 29.631	L&T IN E CB 600MM(2FT) N/O BCR @ NE COR VALLEY VIEW AVE & MANSA DR	Y 11145
BASELINE (2005)	189.995 57.911	DPW BM TAG IN N CB 6M(20FT) W/O BCR @ NW COR COLIMA RD & TELEGRAPH RD (E END C. B.)	Y 11146
BASELINE (2005)	197.325 60.145	DPW BM TAG IN N CB 1M(3.3FT) W/O BCR @ NW COR VALLEY VIEW AVE & TELEGRAPH RD	Y 11147
BASELINE (2005)	164.058 50.005	DPW BM TAG IN N CB 1M(3.3FT) W/O BCR @ NW COR GUN AVE & TELEGRAPH RD	Y 11148
NORWALK (2005)	113.611 34.629	L&T IN N CB 4.6M(15') W/O BCR @ NW COR LEFFINGWELL RD & LOMA DR	Y 11151
NORWALK (2005)	141.954 43.268	L&T IN W CB 4M(13') S/O BCR @ SW COR CARMENITA RD & SUNSHINE AVE	Y 11153
NORWALK (2005)	157.657 48.054	DPW BM TAG IN E CB 1M(3.3') S/O BCR @ SE COR CARMENITA RD & BEATY AVE	Y 11154
BASELINE (2005)	127.237 38.782	RAMSET IN W CB 13.5M(44.3FT) S/O ECR @ SW COR FLORANCE AV & PARAMOUNT BL	Y 11395
NORWALK (2005)	101.613 30.972	L&BN IN S CB 300MM(1') W/O BCR @ SW COR IMPERIAL HWY & DOWNEY AVE	Y 11447

QUAD YEAR	ELEV FOOT/METER	DESCRIPTION	BM NUMBER
NORWALK (2005)	100.162 30.529	LACO BM TAG @ CUL-DE-SAC OF SERVICE RD @ SE COR IMPERIAL HWY & BROOKSHIRE AVE 23M(75.5') S/O & 25M(82') E/O C/L INT @ HSE #8504	Y 11448
NORWALK (2005)	97.099 29.596	LACO BM TAG IN S CB 1M(3.3') E/O BCR @ SE COR IMPERIAL HWY & LAKEWOOD BLVD	Y 11449
NORWALK (2005)	99.345 30.280	RAMSET IN S CB 1.6M(5.3') W/O BCR @ SW COR IMPERIAL HWY & DOMART AVE	Y 11450
NORWALK (2005)	99.373 30.289	L&T IN N CB OF SERV RD ISLAND 9M(29.5FT) E/O BCR 13M(43FT) S/O C/L IMPERIAL HWY & 8M(26FT) E/O C/L DOMART AVE	Y 11451
NORWALK (2005)	100.317 30.577	LACO BM TAG IN W CB 300MM(1') S/O BCR @ SW COR IMPERIAL HWY & FAIRFORD AVE	Y 11453
NORWALK (2005)	100.879 30.748	L&T IN S CB SERV RD ISLAND 300MM(1') E/O BCR 14M(46') S/O C/L IMPERIAL HWY & 11.5M(38') E/O C/L FAIRFORD AVE	Y 11454
NORWALK (2005)	106.913 32.587	LACO BM TAG IN S CB 300MM(1') W/O BCR @ SW COR IMPERIAL HWY & PIONEER BLVD	Y 11455
NORWALK (2005)	107.540 32.778	L&T IN W END HDWL @ SE COR IMPERIAL HWY & PIONEER BLVD 23.6M(77') E/O & 13M(43') S/O C/L INT	Y 11456
NORWALK (2005)	107.601 32.797	LACO BM TAG IN N CB 300MM(1') E/O BCR @ NE COR IMPERIAL HWY & NORWALK BLVD	Y 11457
NORWALK (2005)	107.644 32.810	LACO BM TAG IN S CB 300MM(1') W/O BCR @ SE COR IMPERIAL HWY & NORWALK BLVD	Y 11458
NORWALK (2005)	113.107 34.475	MWD TAG IN S CB 13.5M(44.3') E/O BCR @ SE COR IMPERIAL HWY & BLOOMFIELD AVE	Y 11459
NORWALK (2005)	119.276 36.355	LACO BM TAG IN S CB 300MM(1') E/O BCR @ SE COR IMPERIAL HWY & TRANSPORTATION CTR (EAST) 14M(46') E/O & 13M(43') S/O C/L INT	Y 11460
NORWALK (2005)	123.684 37.699	MWD DISK IN N CB @ BCR NW COR IMPERIAL HWY & SHOEMAKER AVE MKD (OJA 53 1968)	Y 11461
NORWALK (2005)	92.796 28.284	LACO BM TAG IN N CB 300MM(1') E/O BCR @ NE COR WOODRUFF AVE & FOSTER RD	Y 11462
NORWALK (2005)	95.173 29.009	L&T IN E CB WOODRUFF AVE & 18.5M(60.7') N/O C/L PROD ADOREE ST	Y 11463
NORWALK (2005)	110.549 33.695	L&T IN W CB OF (E SERV RD) NORWALK BLVD 4M(13') W/O C/L & 5.5M(18') N/O C/L DUNE ST	Y 11464
NORWALK (2005)	130.272 39.707	LACO BM TAG IN E CB 300MM(1') N/O BCR @ NE COR NORWALK BLVD & LAKELAND RD	Y 11465
NORWALK (2005)	117.437 35.795	L&T IN NW COR OF BRIDGE OVER COYOTE CREEK (N FORK) 12.4M(41') N/O C/L LEFFINGWELL RD & 114M(375') E/O C/L MEYER RD	Y 11467
NORWALK (2005)	112.027 34.146	CS TAG IN W CB MEYER RD 2M(6.5') N/O BCR @ N END C. B. 13.5M(44') W/O C/L & 49.4M(162') N/O C/L LEFFINGWELL RD	Y 11468

QUAD YEAR	ELEV FOOT/METER	DESCRIPTION	BM NUMBER
BASELINE (2005)	146.802 44.745	L&DPW TAG IN N CB TELEGRAPH RD @ NE COR BRIDGE OVER SAN GABRIEL RIVER	Y 11839
BASELINE (2005)	147.185 44.862	L&LS#2428 TAG IN W CB 3M(10FT) N/O ECR @ SW COR TELEGRAPH RD & STAMPS RD	Y 11840
BASELINE (2005)	134.293 40.933	L&DPW TAG @ MOC @ SE COR TELEGRAPH RD & ORR & DAY RD	Y 11841
BASELINE (2005)	156.015 47.554	L&DPW TAG IN N CB 300MM(1FT) E/O BCR @ NE COR MILLS AV & TELEGRAPH RD	Y 11859
BASELINE (2005)	158.897 48.432	L&LS#5411 TAG @ MCR @ NW COR TELEGRAPH RD & CARMENITA RD	Y 11860
BASELINE (2005)	159.068 48.484	L&DPW TAG IN N CB 300MM(1FT) E/O ECR @ NW COR TELEGRAPH RD & CARMENITA RD	Y 11861
BASELINE (2005)	160.848 49.027	L&DPW TAG IN N CB 300MM(1FT) W/O ECR @ NW COR TELEGRAPH RD & LAUREL AV	Y 11862
BASELINE (2005)	158.820 48.408	L&DPW TAG @ MCR @ NW COR TELEGRAPH RD & FREEMAN AV	Y 11863
BASELINE (2005)	154.538 47.103	L&T IN N CB 300MM(1FT) W/O ECR @ NW COR TELEGRAPH RD & SANTA FE SPRINGS RD	Y 11864
BASELINE (2005)	146.629 44.693	L&DPW TAG IN N CB @ CTR C.B. IN FRONT OF BLDG #12309 ON TELEGRAPH RD	Y 11865
BASELINE (2005)	188.525 57.463	SPK IN S CB 1.5M(5FT) E/O BCR @ SE COR TELEGRAPH RD & LEFFINGWELL RD	Y 11866
BASELINE (2005)	185.794 56.630	L&LS#2996 TAG IN N CB 1.5M(5FT) W/O BCR @ NE COR TELEGRAPH RD & LEFFINGWELL RD	Y 11867
BASELINE (2005)	134.609 41.029	L&DPW TAG IN N CB @ E END OF BRIDGE OVER COYOTE CREEK ON TELEGRAPH RD	Y 11868
BASELINE (2005)	135.685 41.357	L&DPW TAG IN N CB @ W END OF BRIDGE OVER COYOTE CREEK ON TELEGRAPH RD	Y 11869
BASELINE (2005)	119.067 36.292	MWD RP TAG IN S CB 600MM(2FT) W/O BCR @ SE COR VALLEY VIEW AV & IMPERIAL HWY	Y 11898
BASELINE (2005)	68.795 20.969	L&CALTRANS TAG IN W CB 1.5M(5FT) N/O BCR @ NW COR VALLEY VIEW AV & ALONDRA BL	Y 11899
BASELINE (2005)	68.994 21.029	L&CALTRANS TAG IN N CB 300MM(1FT) E/O BCR @ NE COR VALLEY VIEW AV & ALONDRA BL	Y 11900
BASELINE (2005)	82.082 25.019	L&DPW TAG IN E CB 300MM(1FT) N/O ECR @ NE COR VALLEY VIEW AV & GANNET ST	Y 11902
NORWALK (2005)	139.324 42.466	L&LS #4189 IN S CB 300MM(1FT) W/O BCR @ SW COR NORWALK BL & MORA DR	Y 11985
NORWALK (2005)	110.309 33.622	L&DPW TAG IN S CB 600MM(2FT) E/O ECR @ SE COR IMPERIAL HWY & TRANSPORTATION CTR	Y 11986

QUAD YEAR	ELEV FOOT/METER	DESCRIPTION	BM NUMBER
NORWALK (2005)	103.668 31.598	L&DPW TAG IN N CB 6.1M(20FT) E/O BCR @ NE COR IMPERIAL HWY & FIRESTONE BL	Y 11987
NORWALK (2005)	102.246 31.165	L&T @ MCR @ NW COR IMPERIAL HWY & STUDEBAKER RD	Y 11988
BASELINE (2005)	118.547 36.133	L&LS#5411 TAG IN W CB 1.5M(5FT) N/O BCR @ NW COR PARAMOUNT BL & 2ND ST	Y 11989
NORWALK (2005)	108.565 33.091	L&CITY ENG TAG IN W CB PARAMOUNT BL 10.7M(35FT) N/O C/L PROD ALAMEDA ST	Y 11990
BASELINE (2005)	78.599 23.957	L&LS#4453 TAG IN S CB 300MM(1FT) W/O BCR @ SW COR PARAMOUNT BL & PEARLE ST	Y 11991
BASELINE (2005)	80.217 24.450	L&LS3134 TAG IN E CB 15.2M(50FT) S/O BCR @ SE COR PARAMOUNT BL & CENTURY BL	Y 11992
BASELINE (2005)	100.363 30.591	L&DPW TAG @ MCR @ NE COR PARAMOUNT BL & IMPERIAL HWY	Y 11993
NORWALK (2005)	75.455 22.999	L&LS#4113 @ MCR @ NE COR ALONDRA BL & WOODRUFF AV	Y 11994
BASELINE (2005)	76.594 23.346	L&CO ENG TAG IN N CB 3M(10FT) E/O ECR @ NW COR ALONDRA BL & BELLFLOWER BL	Y 11995
BASELINE (2005)	74.082 22.580	L&T IN N CB 900MM(3FT) E/O ECR @ NW COR ALONDRA BL & RYON AV	Y 11996
BASELINE (2005)	70.598 21.518	L&LAFCD TAG IN N CB 1.5M(5FT) E/O ECR @ NW COR ALONDRA BL & CLARK AV	Y 11997
BASELINE (2005)	69.821 21.282	L&DPW TAG @ MCR @ SW COR ALONDRA BL & PITTS AV	Y 11998
BASELINE (2005)	71.487 21.789	RAM SET @ MCR @ SE COR ALONDRA BL & LAKEWOOD BL	Y 11999
BASELINE (2005)	74.382 22.672	L&DPW TAG IN S CB 300MM(1FT) E/O ECR @ SE COR ALONDRA BL & PACIFIC AV	Y 12000
BASELINE (2005)	88.469 26.965	L&DPW TAG @ MCR @ SE COR ROSECRANS AV & JERSEY AV	Y 12001
BASELINE (2005)	85.636 26.102	L&LS TAG#5411 IN W CB 7.6M(25FT) N/O BCR @ NW COR FIRESTONE BL & ROSECRANS AV	Y 12002
BASELINE (2005)	80.987 24.685	L&LACO DPW TAG IN S CB 300MM(1FT) W/O BCR @ SW COR FIRESTONE BL & SHOEMAKER AV	Y 12003
BASELINE (2005)	83.148 25.344	L&DPW TAG IN S CB FIRESTONE BL 300MM(1FT) W/O EL MONTE RV ENT TO BLDG #12818	Y 12004
BASELINE (2005)	68.704 20.941	L&LAFCD TAG IN CONC WALK OF COYOTE CREEK BRIDGE 19.8M(65FT) E/O C/L BRIDGE ON FIRESTONE BL	Y 12005

QUAD YEAR	ELEV FOOT/METER	DESCRIPTION	BM NUMBER
NORWALK (2005)	103.482 31.541	L&B IN E CB 1.5M(5FT) S/O ECR @ NE COR WASHBURN RD & WOODRUFF AV	Y 12006
NORWALK (2005)	116.475 35.502	L&DPW TAG IN N CB 900MM(3FT) E/O BCR @ NE COR FIRESTONE BL & BROOKSHIRE AV	Y 12007
NORWALK (2005)	118.029 35.975	L&DPW TAG IN S CB 900MM(3FT) E/O ECR @ SE COR FIRESTONE BL & DOWNEY AV	Y 12008
NORWALK (2005)	113.286 34.530	LS#6771 TAG IN S CB 3.7M(12FT) E/O BCR @ SW COR FIRESTONE BL & LAKEWOOD BL	Y 12009
NORWALK (2005)	102.590 31.270	LS#6111 TAG IN S CB @ ECR @ SE COR IMPERIAL HWY & DOWNEY AV	Y 12011
NORWALK (2005)	76.826 23.417	LS#6771 TAG NR MCR @ NW COR ROSECRANS AV & ANDERSON ST	Y 12012
NORWALK (2005)	77.116 23.505	LS#6771 TAG IN N CB 3M(10FT) W/O BCR @ NE COR ROSECRANS AV & ANDERSON ST	Y 12013
NORWALK (2005)	90.507 27.587	L&T IN N CB 2.4M(8FT) E/O ECR @ NW COR ROSECRANS AV & LAKEWOOD BL	Y 12014
NORWALK (2005)	87.454 26.656	L&LACO DPW TAG IN W CB LAKEWOOD BL NR C/L PROD JEFF ST	Y 12015
NORWALK (2005)	87.323 26.616	LS#2345 TAG IN W CB LAKEWOOD BL 24M(80FT) S/O C/L PROD JEFF ST	Y 12016
NORWALK (2005)	82.078 25.017	L&T IN W CB 2.4M(8FT) N/O ECR @ SW COR LAKEWOOD BL & SOMERSET BL	Y 12017
NORWALK (2005)	73.992 22.553	L&T IN W CB LAKEWOOD BL 10.7M(35FT) N/O C/L PROD ALGEROMA ST	Y 12018
NORWALK (2005)	82.658 25.194	L&DPW TAG IN W CB 900MM(3FT) N/O BCR @ NW COR LAKEWOOD BL & & SOMERSET BL	Y 12019